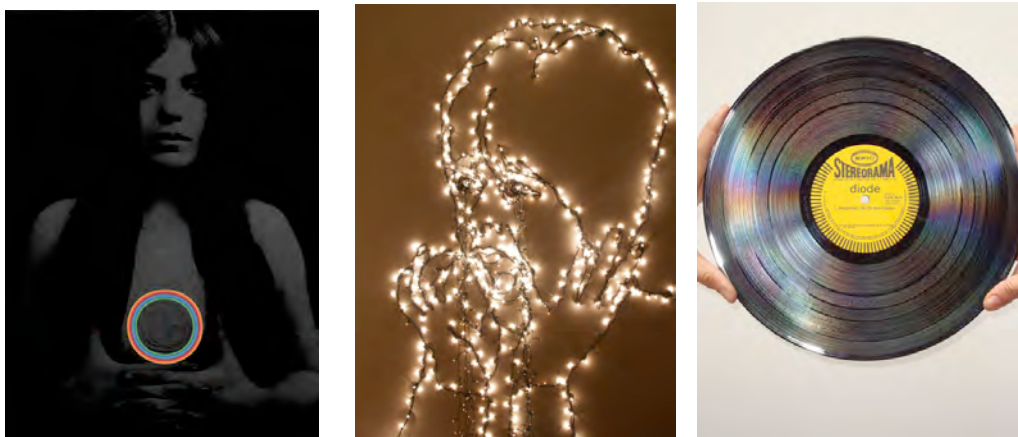


WEST COAST ARTISTS REVISIT THE PAST AND FILL THE ROOMS OF LINDEN WITH THE SPIRIT OF '68

1968 was a year that changed the world....the end of the American dream with the assassination of Martin Luther King Jr and Bobby Kennedy....the opening of the National Gallery of Victoria in Melbourne and the now famous exhibition, The Field....the loss of a Prime Minister as Harold Holt was officially declared missing....and of course, a simultaneous movement of rebellion and revolt in countries throughout the world.



On the fortieth anniversary of 1968, the Linden Centre for Contemporary Arts hosts an exhibition of Western Australian artists based in the year 1968 – a time when Linden functioned as a private guest house. ***Linden1968*** is a major multi-arts survey that profiles both emerging and established WA-based artists to an interstate audience. **The exhibition opens at Linden on Friday 7 November, continuing til 14 December.**

Artists include: **Rebecca Baumann, Aidan Broderick, Marcus Canning, Thea Costantino, Annabel Dixon, ericaamerica, Caspar Fairhall, Pamela Gaunt, Rodney Glick & Lynnette Voevodin, Brendan van Hek & Consuelo Cavaniglia, Bevan Honey, Matthew Hunt, Laura Johnson, Shannon Lyons, Pilar Mata Dupont & Tarryn Gill, Bennett Miller, Tom Muller & Rochelle Phillips, Tony Nathan, Poppy van Oorde Grainger, Simon Pericich, Ben Riding, Kevin Robertson and diode, Bruce Slatter, Eli Smith, Justin Smith, Ric Spencer & Peter McCaughey.** Curated by Hannah Mathews & Ben Riding

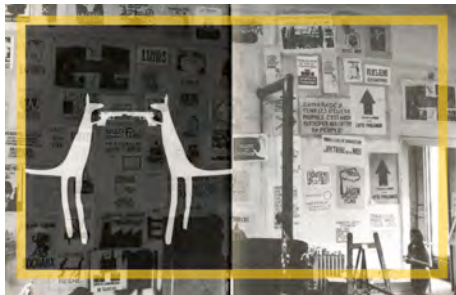
The exhibiting artists will respond to a creative and tight curatorial brief: to devise works and strategies within Linden's interior and exterior spaces that will reshape, transform and comment on the site's previous function as a private guest house in the year 1968. Each artist has been asked to consider the significant events that marked 1968 in their creative response to the site; and the results include a crashed Apollo 7 satellite, protest cars and prime ministerial portraits, with carved vinyl records, a life-size bodhisattva figure and Robert Smithson cave.

The exhibition directly engages with the Linden site, including all five-gallery spaces and the gardens, by responding to its physicality and history, and using these elements as a stimulus for creation. Place, space, function and time will be layered in this exhibition to create a fantastic snapshot of history as both the site, surrounding St Kilda, and contemporary current affairs are reflected on by the artists and their works.

These artists have been invited based on the strength and diversity of their individual practices, which include photography, video, installation, drawing, sculpture and more. Collectively their exhibited works respond to a site-specific and historically anchored curatorial rationale, but they do so with a diverse range of individual visual languages that have become recognizably the artist's own.

Facing geographical limitations, Western Australian artist's work can often be characterized by an ambitious and inquiring interest into the world around us and our relationship to each other. This isolation allows a freedom from influence that in turn permits the production of truly original, radical and unorthodox art. There is also a sense of experimentation and hybridity as visual artists often adopt performative modes within their practice. The model of *Linden1968* is a perfect fit for these artists as it is conceptually complex yet wide open to interpretation, offering an opportunity for the playful and improvised.

Linden1968 will open on **Friday 7 November** with a soiree of sorts; visitors will be checked in before touring the hotel and encountering appropriately tuned performances, readings, happening and displays of all kinds. The exhibition will continue after the opening night as a document to the existence of the hotel and its life in St Kilda, and will be accompanied by a significant project publication taking the form of a revised 1968 issue of the Australian National Geographic. This publication will include commissioned essays by Robert Cook, Rebecca Dean, Andrew Gaynor and Marco Marcon, along with a variety of articles and imagery from the artists and curators.



LINDEN1968

curated by Hannah Mathews & Ben Riding
8 November - 14 December 2008

Linden Centre for Contemporary Arts
26 Acland Street, St Kilda
Ph: 03 9209 6794
Opening Friday 7 November, 6pm

For further information on the Linden1968 exhibition, media images or interviews with the curators and/or artists, please contact:

Hannah Mathews
Email hannahmathews@hotmail.com
Mobile 040 331 9070

Ben Riding
Email launchart@hotmail.com
Mobile 043 997 4899

Linden1968 has been generously supported by the Western Australian Government through the Department of Culture and the Arts and the Australian Government through the Australia Council, its arts funding and advisory body.

